



Technical Contracting



MECHANICAL & ELECTRICAL CONTRACTING







ASYS Engineering, operating in the fields of electromechanical engineering and contracting, has become one of the favorite companies of the sector within a short period since its establishment in 2012. ASYS Engineering until today with its projects making no concessions in quality, its experienced and dynamic staff and its know-how, keeping customer satisfaction beyond anything.

ASYS Engineering, with its national and international business experience and its smart engineering solutions, successfully accomplished electromechanical engineering and contracting works of the many qualified structures such as shopping malls, hotels, hospitals, business centers, housing projects, industrial facilities and telecommunication projects and proved that it is a reliable business partner with its modern management approach and vision.

ETHICAL PRINCIPLES



Our company is a respected organization that keeps commitment to the ethical values in all of its activities and sees ethics as one of the building blocks of corporate culture.

In this context, ethical rules of our company are as follows:

1. BASIC PRINCIPLES

In entire relationships and processes whether out of or within the company, no concession is granted pertaining to virtues of faithfulness, honesty, transparency and equality under any circumstances.

The principles of respect for the people, respect for the environment and respect for the work done are indispensable for the employees at all levels.

All activities are predicated on legal legislations, articles of association and adopted regulations and policies.

2. THE PROTECTION OF THE COMPANY' STANDING

All employees aim at the highest quality in the work they perform and act in accordance with the company interests. They do not forget that each step they take in their professional lives represent the company and they abstain from actions and statements which could harm the company's standing.

3. CONFIDENTIALITY

Every employee is aware of the confidentiality of private information pertaining to the company affiliated, relevant persons, institutions and other employees and is obliged to keep them. Such kind of information is used only for professional purposes required by the work and assignment in accordance with the law and legislations and is shared exclusively with the officials concerned with the issue. Such obligation as well continues in the event of termination of the employees' relationship with the company.

4. INTERNET ACCESS AND ELECTRONIC MAIL

Internet access and e-mail addresses allocated for the use of employees are utilized for professional purposes within the framework of information security policy. Internet access may be limited by company resolution. Websites that are contrary to the law, involved in political propaganda, incompatible with moral values, and entertainment content must not be visited.

5. MISCONDUCT IN OFFICE

Misconduct in office is the person's giving harm to the company as a result of using his authority and responsibility for his own interest or other than due diligence expected from him.

An employee is prohibited from obtaining direct or indirect personal gains arising from entire transactions and contracts where to the company comprise a party through activities such purchasing and the like.

6. CONFLICT OF INTEREST

Circumstances wherein the individual interests may conflict with the company interests and with the interests of the concerned persons and institutions are observed and avoided. Company employees while performing their assignments hold the interests of the corporation beyond anything and abstain from any kinds of actions and behavior which might be construed as providing benefits for themselves or their relatives by using the resources and reputation of the corporation.

ASYS ENGINEERING employees demonstrate maximum care not to abuse the resources of the corporation and to protect the reputation and good standing of the Company.

7. RESPONSIBILITIES

ASYS ENGINEERING, shows ultimate attention to fulfill below stated responsibilities to its customers, employees, suppliers, subcontractors, and to persons and institutions that are commercial associates, competitors, and to the environment and society.

7.1. Conformity with Laws and Legislations

ASYS ENGINEERING shall act in compliance with the laws and regulations of the countries wherein it operates both at home and abroad pertaining to its any kind of activities. The information, documents and records associated with such activities are kept regularly and completely and preserved.

7.2. To Customers

While ASYS ENGINEERING employees perform their tasks are aware of the fact that the expectations of the customers should be met and that they should be satisfied with the work quality. In this context, an honest and fair attitude is adopted in the relationships with the customers. When it is the case with the customers, professionally adhering to the principles of honesty and faithfulness, we make an effort to understand their needs and behave sincerely, eagerly and respectfully in order to help them.

7.3. To Employees

ASYS ENGINEERING, treats its employees impartially, without prejudice and fairly, and shows ultimate attention in order for all employees to work in a healthy, safe and efficient business environment. All employees regardless of race, religion, sex, duty or title are granted equal opportunity both in employment and in career development. In order to make a positive contribution to the performance of employees, attention is paid to ensure the necessary opportunities for their personal development.

Care is demonstrated for timely and complete fulfillment of the rights of employees arising from the provisions of the legislations where to such employees are subject.

7.4. To Suppliers, Subcontractors and Persons and Organizations that are Commercial Associates

ASYS ENGINEERING, acts in an honest, fair, respectful manner and within the frame of goodwill principles to the persons and organizations that are their commercial associates and performs their legal obligations.

ASYS ENGINEERING evaluates and selects the companies, subcontractors, etc., where with they will enter into business relationships in the most accurate manner and in line with the principles of best service and equality. No personal relationship is built with the persons and institutions that are commercial associates and no personal interest is pursued.

7.5. To Our Competitors

ASYS ENGINEERING, makes tiny distinctions regarding development of the sectors wherein they operate, overseeing common interests together with entire companies operating in the sector and on the issue of maintenance of trust to the sector. They abstain from unfair competition against the competitors, and activities are carried out by observing fair competition conditions within the framework of ethical rules.

7.6. To the Environment and Society

ASYS ENGINEERING, acts with the consciousness of social benefit and environment while they carry out their activities and targets applying high standards on the issue of environmental consciousness. Breaches of environmental rules which could harm the health and rights of the customers and the ones living in the region of operation are avoided. In entire fields of operation, activities are carried out in a manner to minimize their adverse effects on the environment and measures avoiding environmental pollution are taken. Consumption of natural resources is kept at the minimum level.

Within the framework of responsibilities to the society; activities pertaining to education and charity, studies aiming development of environmental consciousness and societal consciousness, activities targeting public benefit and cultural and social responsibility projects are supported.

ASYS ENGINEERING, acts sensitively to the traditions and cultures of the countries wherein they operate abroad, accords to the structure of the society and avoids the elements that could adversely affect the social environment. In their activities, they take entire measures for preserving archeological, historical, architectural and cultural monuments as well as for natural environment.

QUALITY, ENVIRONMENT AND OHS POLICY



ASYS ENGINEERING management and employees have undertaken to ensure following conditions on the issue of “Quality, Environment, and Occupational Health and Safety”.

- Aiming at excellence in all conditions in the light of experience and technology.
- Working efficiently and creating added value.
- Supporting the development of our employees and providing them with motivation and job satisfaction.
- Always acting in accordance with the principle of constant improvement and amelioration.
- Using modern and valid methods, engineering, technology, information and management systems required by the epoch, to such end avoiding to abstain from required research and investment.
- Timely completing and delivering projects in accordance with work schedules and technical specifications.
- Complying with the legal regulations and mandatory standards of the countries where the works are fulfilled.
- Ensuring our employees feel happy and proud to be a ASYS ENGINEERING employee. In every step taken and in every decision reached, maintaining the sustainability of the reputation acquired, by acting in accordance with the feeling of responsibility vested by being a ASYS ENGINEERING employee.
- Complying with the applicable occupational health, safety and environmental laws and regulations of the country where the work is performed.
- Raising awareness of our employees, subcontractors and suppliers regarding the impacts they could generate on quality, environment, and occupational health and safety in the course of their activities pertaining to our processes and services and ensuring their active participation and communication on the issues with regards to quality, environment, and occupational health and safety.
- Identifying hazards that could take place associated with occupational health and safety and making relevant risk assessments.
- While Occupational Health and Security and Environment Management Systems are implemented, taking into account the expectations of all parties, including employers as well.
- Minimizing occupational accidents and occupational diseases in both our offices and worksites by creating safe working areas.
- Ensuring that waste products are sorted and evaluated at the source by placing emphasis on the recycling of wastes.
- Preventing wastefulness in the consumption of energy and natural resources.
- Rendering compulsory the application of necessary corrective and preventive actions pertaining to inconveniences of environment, occupational health and safety, work accidents and occupational illnesses and environmental events.

ELECTRICAL WORKS



Energy Distribution Systems



Low, Medium and High Voltage



Emergency Energy Support



Distribution and Control Panels



Lighting Systems



Low Voltage Systems



Smart Grid



Analytical System Measurement



Energy Measurement Solutions



Energy Management



Access Technologies



Parking Lot Solutions



TV Systems



Voice and Voice Announcement Systems



ICI & Data Hosting



Integration Systems



Automation



Information systems



Communication, Telephone and Data Systems



Special Audio and Video Systems



Process Control



Security Systems



Fire Safety and Extinguishing



Lightning Protection Systems



Seismic Protection Measures



Central Battery Systems



Airplane Warning Systems



Electrical Instrumentation



Solar Energy System



Wind Energy Systems



Sustainable Energy



Industrial Automation



Pipe and Mechanical Systems



Heating Systems



Cooling Systems



Ventilation Systems



Pressurization Systems



Smoke Control Systems



Clean Water Systems



Drinking Water Treatment Systems



Water Treatment / Softening Systems



Sea Water Purification Systems



Garden Irrigation Systems



Waste Water Systems



Sewer Systems



Rain Water Systems



Hot Water Systems



Water Heating Systems with Boiler



Fire Fighting Systems



Foam Extinguishing



Fire Extinguishing with Gas



Clean Room / Operating Room Systems



Fuel Storage and Use



Steam Systems



LPG Systems



Steam Systems



Steam Process



Swimming, Ornamental Pool and Sauna Systems



Cogeneration Systems



Generation Systems



Hot Oil Processes



Waste Management




Central Vacuum Systems



Leak Detection Systems





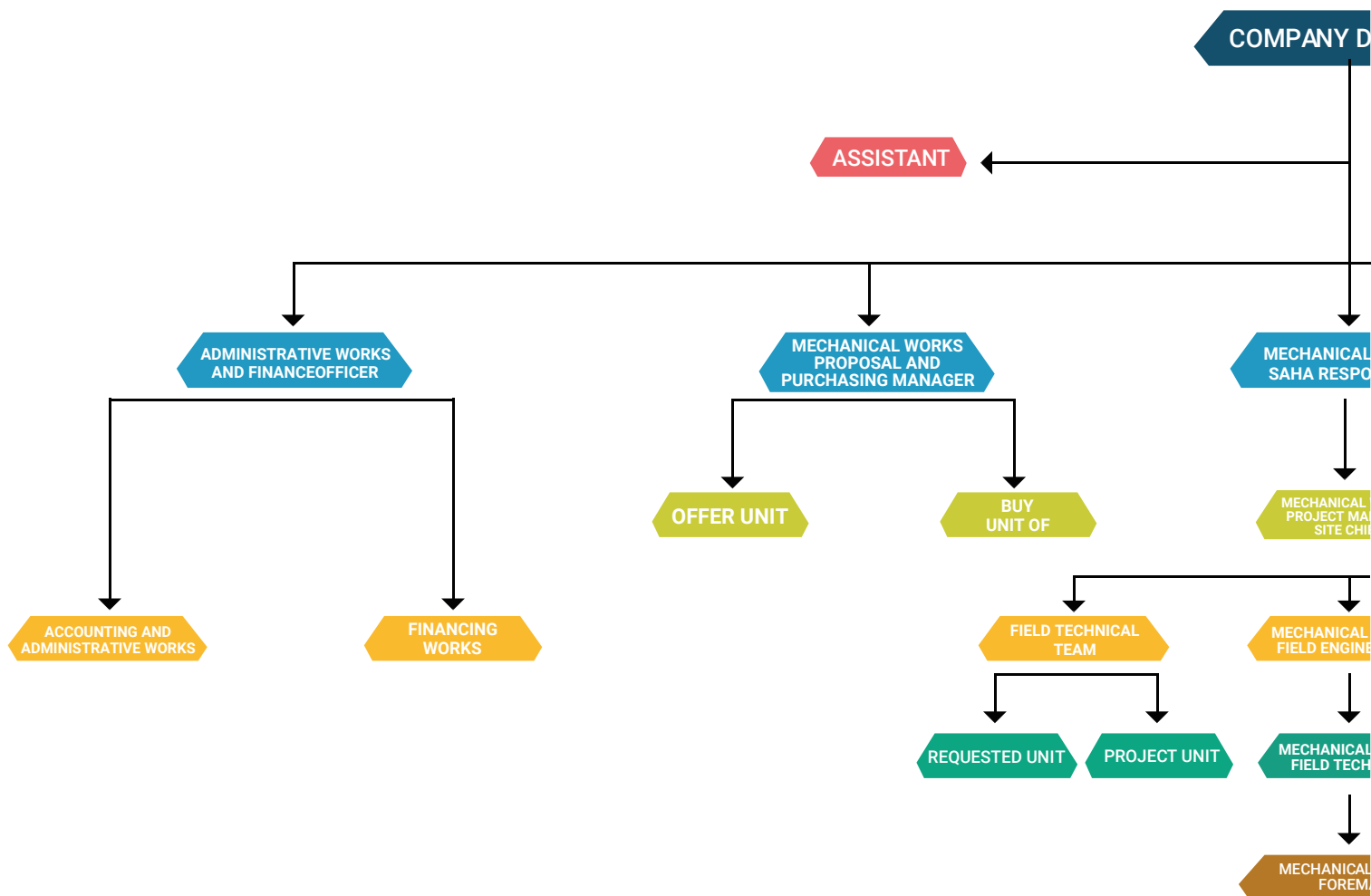
ALL PROJECTS

ALL PROCETS

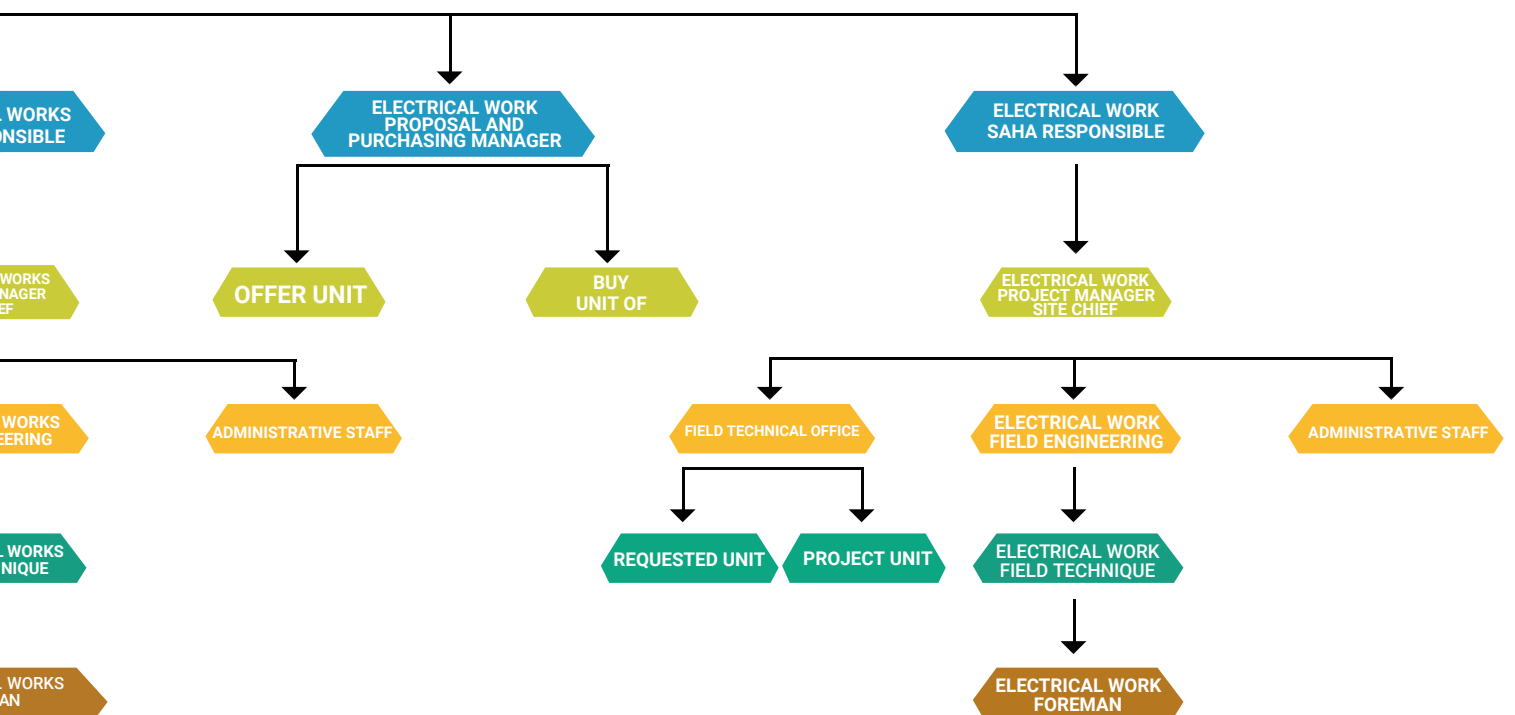
NO	PROJECT	EMPLOYERS	LOCATION	SPACE OF WORKS	TOTAL AREA	DATE
01	Astana Motors Manufacturing Kazakhstan - Multi-Brand Car Factory	Astana Motors	Almaty/KAZAKHSTAN	All Turnkey Electrical & Mechanical Works	235.000 m ²	2024
02	Korupark 5.Levent (On Going)	Biltech	Istanbul/TURKEY	All Electrical Works	190.000 m ²	2023
03	Lamer Dragos (On Going)	Biltech	Istanbul/TURKEY	All Electrical Works	20.000 m ²	2023
04	Almaty Museum Of Arts (On Going)	Astana Motors	Almaty/KAZAKHSTAN	All MEP Works	11.000 m ²	2023
05	Medeu Park Otel (On Going)	Almaly Holding & RAMS	Almaty/KAZAKHSTAN	All MEP Works	23.000 m ²	2022
06	MTC Live ARENA (On Going)	Vikraft	Moscow/RUSSIA	HVAC, Lighting, BMS	50.000 m ²	2022
07	Kamatyres Tire Factory (On Going)	BI Group & Tatneft Holding	Karaganda/KAZAKHSTAN	All Electrical Works	95.000 m ²	2022
08	Deniz Park (On Going)	Matte & KSS JV	Almaty/KAZAKHSTAN	All Electrical Works	50.000 m ²	2021
09	Turkestan City Hospital (On Going)	YDA Holding & BI Group JV	Turkestan/KAZAKHSTAN	All Electrical Works	90.000 m ²	2021
10	NEF Uptown	Nef & Rams JV	Almaty/KAZAKHSTAN	All the MEP Works	240.000 m ²	2021
11	Orchard Residences (On Going)	Private	Almaty/KAZAKHSTAN	All the MEP Works	29.000 m ²	2021
12	La Verde (On Going)	Rams	Almaty/KAZAKHSTAN	All the MEP Works	35.000 m ²	2021
13	Private Villa	Private	Almaty/KAZAKHSTAN	All the MEP Works	3.000 m ²	2021
14	Helmir Hospital 1	Rams	Almaty/KAZAKHSTAN	All the MEP Works	5.000 m ²	2020
15	Helmir Hospital 2	Rams	Almaty/KAZAKHSTAN	All the MEP Works	9.000 m ²	2020
16	Turkestan International Airport	YDA Holding	Turkestan/KAZAKHSTAN	All ELV, ICT, BMS	25.000 m ²	2020
17	Alfarabi Business Center	Rams	Almaty/KAZAKHSTAN	All the MEP Works	11.000 m ²	2020
18	Rams Business Center	Rams	Almaty/KAZAKHSTAN	All the MEP Works	9.000 m ²	2020
19	Oxygen Business Center	Eksen Group	Almaty/KAZAKHSTAN	All the MEP Works	30.000 m ²	2019
20	Six Senses Kocataş Mansions	Biltech	Istanbul/TURKEY	All Electrical Works	12.000 m ²	2019
21	Volkovgeologiya Uranium Laboratory	Algabas	Almaty/KAZAKHSTAN	All the MEP Works	3.400 m ²	2018
22	Fontan Aquapark	Tamerlan Corp	Shymkent/KAZAKHSTAN	All the MEP Works	5.700 m ²	2018
23	Aquapark "TREE of LIFE" AKTOBE	Tree of Life	Aktobe/KAZAKHSTAN	All the MEP Works	5.720 m ²	2018
24	Student Center (Istanbul City University)	Biltech	Istanbul/TURKEY	All Electrical Works	15.000 m ²	2017
25	Student Dormitory (Istanbul City University)	Biltech	Istanbul/TURKEY	All Electrical Works	25.000 m ²	2017
26	Education Buildings (Istanbul City University)	Biltech	Istanbul/TURKEY	All Electrical Works	34.000 m ²	2017
27	Astana Expo 2017 Business Center	Sembol Construction	Astana/KAZAKHSTAN	HVAC and BMS Control Systems	11.500 m ²	2017
28	Marakanda Entertainment Center	Esperanza Group	Almaty/KAZAKHSTAN	All the MEP Works	5.700 m ²	2017
29	Esperanza Entertainment Center	Esperanza Group	Almaty/KAZAKHSTAN	All the MEP Works	6.450 m ²	2017
30	BN Plaza Business Center	BN Group	Almaty/KAZAKHSTAN	All the MEP Works	15.450 m ²	2017
31	Aidana Plaza Hotel	Tamerlan Corp	Shymkent/KAZAKHSTAN	All the MEP Works	18.750 m ²	2017
32	Mega Park Shopping Mall	Ata Sroy	Almaty/KAZAKHSTAN	Lighting and BMS Control Systems	106.226 m ²	2017
33	Tree of Life "AKTAU"	Tree of Life	Aktau/KAZAKHSTAN	All the MEP Works	8.700 m ²	2017
34	Astana Wyndham Garden Hotel	GO Management	Astana/KAZAKHSTAN	HVAC Works	28.750 m ²	2017
35	Shymkent Plaza Shopping Center	TS Development	Shymkent/KAZAKHSTAN	Lighting and BMS Control Systems	54.000 m ²	2016

NO	PROJECT	EMPLOYERS	LOCATION	SPACE OF WORKS	TOTAL AREA	DATE
36	Gogol Entertainment Center	Esperanza Group	Almaty/KAZAKHSTAN	All the MEP Works	2.450 m ²	2016
37	Dubai Jumeirah Palm	Custom	Jumeirah Palm/DUBAI	Low Voltage, KNX and Media Automation	850 m ²	2016
38	Esentai Mall, Office	Esantai Office	Almaty/KAZAKHSTAN	Low Voltage, KNX and Media Automation	1.650 m ²	2016
39	Mc Donald's Central Office	Almaly Holding	Almaty/KAZAKHSTAN	Electric, Low Voltage and Automation Systems	5.845 m ²	2016
40	Football Academy T.Segizbayev, FC Kairat	Almaly Holding	Almaty/KAZAKHSTAN	Lighting and BMS Control Systems	7.200 m ²	2015
41	Almaty Ramada Hotel	GO Management	Almaty/KAZAKHSTAN	All the MEP Works	29.480 m ²	2015
42	Terra Nova Beverages Fabric	Terra Nova	Almaty/KAZAKHSTAN	Lighting and BMS Control Systems	6.400 m ²	2014
43	National Museum of Kazakhstan	Turkuaz-YDA	Astana/KAZAKHSTAN	Lighting and BMS Control Systems	74.000 m ²	2014
44	Bayterek Residence	Turkuaz Invest	Almaty/KAZAKHSTAN	Lighting and BMS Control Systems	5.000 m ²	2014
45	Dostyk Plaza Shopping Mall	TS Engineering	Almaty/KAZAKHSTAN	Lighting and BMS Control Systems	134.000 m ²	2014
46	Kazakhmys Central Office	Sembol Construction	Astana/KAZAKHSTAN	Lighting and BMS Control Systems	22.840 m ²	2014
47	Bishkek Park Shopping Mall	Bishkek Park Mall	Bishkek/KIRGIZHSTAN	Lighting and BMS Control Systems	60.000 m ²	2014
48	Efes Pilsen Factory	Anadolu Holding	Almaty/KAZAKHSTAN	All Electrical Works	25.000 m ²	2014
49	N.Nazarbayev University, Technopark Laboratory	N.Nazarbayev University	Astana/KAZAKHSTAN	Lighting and BMS Control Systems	2.328 m ²	2013
50	CRL Microbiological Laboratory	Temurs-Integra Group	Almaty/KAZAKHSTAN	All the MEP Works	7.800 m ²	2013
51	Abdi Ibrahim Global Farm Fabric	Abdi Ibrahim Global Farm Fabric	Almaty/KAZAKHSTAN	All the MEP Works	12.000 m ²	2013
52	Mega Center 2 Shopping Mall	Ata Sroy	Almaty/KAZAKHSTAN	Lighting and BMS Control Systems	77.000 m ²	2012
53	Parkview Office Tower Business Center	Sembol Construction	Almaty/KAZAKHSTAN	Lighting and BMS Control Systems	25.550 m ²	2012
54	Astana Media Center	Sembol Construction	Astana/KAZAKHSTAN	Lighting and BMS Control Systems	77.055 m ²	2012
55	Khan Shatyr Residence	Sembol Construction	Astana/KAZAKHSTAN	Lighting and BMS Control Systems	39.487 m ²	2012
56	Almaty Resort Sanatorium	Almaty Resort	Almaty/KAZAKHSTAN	Lighting and BMS Control Systems	57.000 m ²	2011
57	Khan Shatyr Shopping Mall	Sembol Construction	Astana/KAZAKHSTAN	Lighting and BMS Control Systems	140.000 m ²	2010
58	Congress Hall in Astana	Sembol Construction	Astana/KAZAKHSTAN	Lighting and BMS Control Systems	40.365 m ²	2009
59	Astana Arena Football Stadium	Sembol Construction	Astana/KAZAKHSTAN	Lighting and BMS Control Systems	66.521 m ²	2009
60	Palace of Peace and Reconciliation	Sembol Construction	Astana/KAZAKHSTAN	Lighting and BMS Control Systems	28.791 m ²	2006
61	Hotel Rixos President	Sembol Construction	Astana/KAZAKHSTAN	Lighting and BMS Control Systems	27.600 m ²	2005
62						
63						
64						
65						
66						
67						
68						
69						
70						

ORGANIZATION CHART



DIRECTOR



Astana Motors Manufacturing Kazakhstan Multi-Brand Car Factory



Employers: Astana Motors

Project Location: Almaty - Kazakhstan

Space of Works: All Turnkey Electrical & Mechanical Works

Total Area: 235.000 m²

Date: 2024 (On Going)

Korupark 5. Levent (On Going)



Employers: Biltech

Project Location: Istanbul-TURKEY

Space of Works: All Electrical Works

Total Area: 190.000 m²

Date: 2023 (On Going)

Lamer Dragos (On Going)



Employers: Biltech

Project Location: Istanbul-TURKEY

Space of Works: All Electrical Works

Total Area: 20.000 m²

Date: 2023 (On Going)

Astana Museum Of Arts (On Going)



Employers: Astana Motors

Project Location: Almaty-KAZAKHSTAN

Space of Works: All Mep Works

Total Area: 11.000 m²

Date: 2023 (On Going)

Medeu Park Otel (On Going)



Employers: Almaly Holding & RAMS

Project Location: Almaty-KAZAKHSTAN

Space of Works: All MEP Works

Total Area: 23.000 m²

Date: 2022 (On Going)

MTC Live Arena (On Going)



Employers: Vikraft

Project Location: Moscow - RUSSIA

Space of Works: Hvac, Lighting, BMS

Total Area: 50.000 m²

Date: 2022 (On Going)

Kamatyres Tire Factory (On Going)



Employers: BI Group & Tatneft Holding

Project Location: Karaganda-KAZAKHSTAN

Space of Works: All Electrical Works

Total Area: 95.000 m²

Date: 2022 (On Going)

Deniz Park (On Going)



Employers: Matte & KSS JV

Project Location: Almaty-KAZAKHSTAN

Space of Works: All Electrical Works

Total Area: 50.000 m²

Date: 2021 (On Going)

Turkestan City Hospital (On Going)



Employers: YDA Holding & BI Group JV

Project Location: Turkestan-KAZAKHSTAN

Space of Works: All Electrical Works

Total Area: 90.000 m²

Date: 2021 (On Going)

NEF Uptown



Employers: Nef & Rams JV

Project Location: Almaty-KAZAKHSTAN

Space of Works: All the MEP Works

Total Area: 240.000 m²

Date: 2021

Orchard Residences (On Going)



Employers: Private

Project Location: Almaty-KAZAKHSTAN

Space of Works: All the MEP Works

Total Area: 29.000 m²

Date: 2021 (On Going)

La Verde (On Going)



Employers: Rams

Project Location: Almaty-KAZAKHSTAN

Space of Works: All the MEP Works

Total Area: 35.000 m²

Date: 2021 (On Going)

Private Villa



Employers: Private

Project Location: Almaty-KAZAKHSTAN

Space of Works: All the MEP Works

Total Area: 3.000 m²

Date: 2021

Helmir Hospital 1



Employers: Rams

Project Location: Almaty-KAZAKHSTAN

Space of Works: All the MEP Works

Total Area: 9.000 m²

Date: 2020

Helmir Hospital 2



Employers: Rams

Project Location: Almaty-KAZAKHSTAN

Space of Works: All the MEP Works

Total Area: 5.000 m²

Date: 2020

Turkestan International Airport



Employers: YDA Holding

Project Location: Turkestan-KAZAKHSTAN

Space of Works: All ELV, ICT, BMS

Total Area: 25.000 m²

Date: 2020

Alfarabi Business Center



Employers: Rams

Project Location: Almaty-KAZAKHSTAN

Space of Works: All the MEP Works

Total Area: 11.000 m²

Date: 2020

Rams Business Center



Employers: Rams

Project Location: Almaty-KAZAKHSTAN

Space of Works: All the MEP Works

Total Area: 9.000 m²

Date: 2020

Oxygen Business Center



Employers: Eksen Group

Project Location: Almaty-KAZAKHSTAN

Space of Works: All the MEP Works

Total Area: 30.000 m²

Date: 2019

Six Senses Kocataş Mansion



Employers: Biltech

Project Location: Istanbul-TURKEY

Space of Works: All Electrical Works

Total Area: 12.000 m²

Date: 2019

Volkovgeologiya Uranium Laboratory



Employers: Algabas

Project Location: Almaty-KAZAKHSTAN

Space of Works: All the MEP Works

Total Area: 3.400 m²

Date: 2018

Fontan Aquapark



Employers: Tamerlan Corp.

Project Location: Shymkent-KAZAKHSTAN

Space of Works: All the MEP Works

Total Area: 5.700 m²

Date: 2018

Aquapark "TREE of LIFE" AKTOBE



Employers: Tree of Life

Project Location: Aktope-KAZAKHSTAN

Space of Works: All the MEP Works

Total Area: 5.720 m²

Date: 2018

Student Center (Istanbul City University)



Employers: Biltech

Project Location: Istanbul-TURKEY

Space of Works: All Electrical Works

Total Area: 15.000 m²

Date: 2017

Student Dormitory (Istanbul City University)



Employers: Biltech

Project Location: Istanbul-TURKEY

Space of Works: All Electrical Works

Total Area: 25.000 m²

Date: 2017

Education Buildings (Istanbul City University)



Employers: Biltech

Project Location: Istanbul-TURKEY

Space of Works: All Electrical Works

Total Area: 34.000 m²

Date: 2017

Astana Expo 2017 - Business Center



Employers: Sembol Construction

Project Location: Astana-KAZAKHSTAN

Space of Works: HVAC and BMS Control Systems

Total Area: 11.500 m²

Date: 2017

Marakanda Entertainment Center



Employers: Esperanza Group

Project Location: Almaty-KAZAKHSTAN

Space of Works: All the MEP Works

Total Area: 5.700 m²

Date: 2017

Esperanza Entertainment Center



Employers: Esperanza Group

Project Location: Almaty-KAZAKHSTAN

Space of Works: All the MEP Works

Total Area: 6.450 m²

Date: 2017

BN Plaza Business Center



Employers: BN Group

Project Location: Almaty-KAZAKHSTAN

Space of Works: All the MEP Works

Total Area: 15.450 m²

Date: 2017

Aidana Plaza Hotel



Employers: Tamerlan Corp.

Project Location: Shymkent-KAZAKHSTAN

Space of Works: All the MEP Works

Total Area: 18.750 m²

Date: 2017

Mega Park Shopping Mall



Employers: Ata Stroy

Project Location: Almaty-KAZAKHSTAN

Space of Works: Lighting and BMS Controls Systems

Total Area: 106.226 m²

Date: 2017

Tree of Life AKTAU



Employers: Tree of Life

Project Location: Aktau-KAZAKHSTAN

Space of Works: All the MEP Works

Total Area: 8.700 m²

Date: 2017

Astana Wyndham Garden Hotel



Employers: GQ Management

Project Location: Astana-KAZAKHSTAN

Space of Works: HVAC Works

Total Area: 28.750 m²

Date: 2017

Shymkent Plaza Shopping Center



Employers: TS Development

Project Location: Shymkent -KAZAKHSTAN

Space of Works: Lighting and BMS Controls Systems

Total Area: 54.000 m²

Date: 2016

Gogol Entertainment Center



Employers: Esperanza Group

Project Location: Almaty-KAZAKHSTAN

Space of Works: All the MEP Works

Total Area: 2.450 m²

Date: 2016

Dubai Jumeirah Palm



Employers: Custom

Project Location: Jumeirah Palm-DUBAI

Space of Works: Low Voltage, KNX and Media Automation

Total Area: 850 m²

Date: 2016

Esentai Mall Office



Employers: Esentai Office

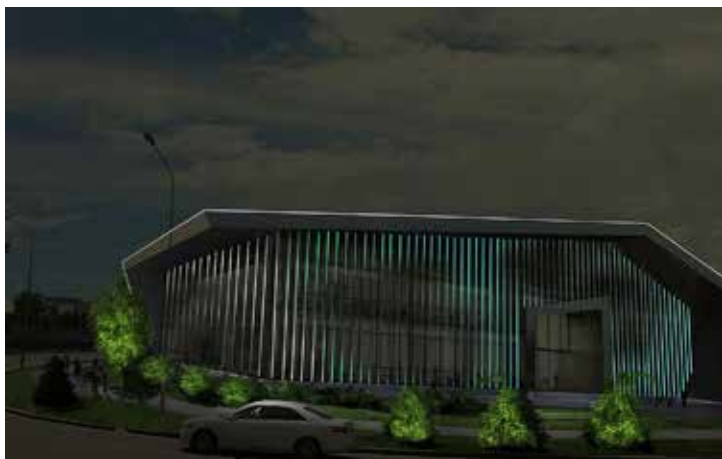
Project Location: Almaty-KAZAKHSTAN

Space of Works: Low Voltage, KNX and Media Automation

Total Area: 1.650 m²

Date: 2016

Mc Donald's Central Office



Employers: Almaly Holding

Project Location: Almaty-KAZAKHSTAN

Space of Works: Electric, Low Voltage and Automation Systems

Total Area: 5.845 m²

Date: 2016

Football Academy T.Sezginbayev, FC Kairat



Employers: Almaly Group

Project Location: Astana-KAZAKHSTAN

Space of Works: Lighting and BMS Controls Systems

Total Area: 7.200 m²

Date: 2015

Almaty Ramada Hotel



Employers: GQ Management

Project Location: Almaty -KAZAKHSTAN

Space of Works: All the MEP Works

Total Area: 29.480 m²

Date: 2015

Terra Nova Beverages Fabric



Employers: Terra Nova

Project Location: Almaty-KAZAKHSTAN

Space of Works: Lighting and BMS Controls Systems

Total Area: 6.400 m²

Date: 2014

National Museum of Kazakhstan



Employers: Turkuaz-YDA

Project Location: Astana-KAZAKHSTAN

Space of Works: Lighting and BMS Controls Systems

Total Area: 74.000 m²

Date: 2014

Bayterek Residence



Employers: Turkuaz Invest

Project Location: Almaty-KAZAKHSTAN

Space of Works: Lighting and BMS Controls Systems

Total Area: 5.000 m²

Date: 2014

Dostyk Plaza Shopping Center



Employers: TS Engineering

Project Location: Almaty-KAZAKHSTAN

Space of Works: Lighting and BMS Controls Systems

Total Area: 134.000 m²

Date: 2014

Kazakhmys Central Office



Employers: Sembol Construction

Project Location: Astana-KAZAKHSTAN

Space of Works: Lighting and BMS Controls Systems

Total Area: 22.840 m²

Date: 2014

Bishkek Park Shopping Mall



Employers: Bishkek Park Mall

Project Location: Bishkek-KIRGIZHSTAN

Space of Works: Lighting and BMS Controls Systems

Total Area: 60.000 m²

Date: 2014

Efes Pilsen Factory



Employers: Anadolu Holding

Project Location: Almaty-KAZAKHSTAN

Space of Works: All The Electrical Works

Total Area: 25.000 m²

Date: 2014

N.Nazarbayev University, Technopark Laboratory



Employers: N.Nazarbayev University

Project Location: Astana-KAZAKHSTAN

Space of Works: Lighting and BMS Controls Systems

Total Area: 2.328 m²

Date: 2013

CRL Microbiological Laboratory



Employers: Temurs-Integra Group

Project Location: Almaty-KAZAKHSTAN

Space of Works: All The MEP Works

Total Area: 7.800 m²

Date: 2013

Abdi Ibrahim Global Farm Fabric



Employers: Abdi Ibrahim Global Farm Fabric

Project Location: Almaty-KAZAKHSTAN

Space of Works: All The MEP Works

Total Area: 12.000 m²

Date: 2013

Mega Center 2 Shopping Mall



Employers: Ata Sroy

Project Location: Almaty-KAZAKHSTAN

Space of Works: Lighting and BMS Controls Systems

Total Area: 77.000 m²

Date: 2012

Parkview Office Tower Business Center



Employers: Sembol Construction

Project Location: Almaty-KAZAKHSTAN

Space of Works: Lighting and BMS Controls Systems

Total Area: 25.550 m²

Date: 2012

Astana Media Center



Employers: Sembol Construction

Project Location: Astana-KAZAKHSTAN

Space of Works: Lighting and BMS Controls Systems

Total Area: 77.055 m²

Date: 2012

Khan Shatyr Residence



Employers: Sembol Construction

Project Location: Astana-KAZAKHSTAN

Space of Works: Lighting and BMS Controls Systems

Total Area: 39.487 m²

Date: 2012

Almaty Resort Sanatorium



Employers: Almaty Resort

Project Location: Almaty-KAZAKHSTAN

Space of Works: Lighting and BMS Controls Systems

Total Area: 57.000 m²

Date: 2011

Khan Shatyr Shopping Mall



Employers: Sembol Construction

Project Location: Astana-KAZAKHSTAN

Space of Works: Lighting and BMS Controls Systems

Total Area: 140.000 m²

Date: 2010

Congress Hall in Astana



Employers: Sembol Construction

Project Location: Astana-KAZAKHSTAN

Space of Works: Lighting and BMS Controls Systems

Total Area: 40.365 m²

Date: 2009

Astana Arena Football Stadium



Employers: Sembol Construction

Project Location: Astana-KAZAKHSTAN

Space of Works: Lighting and BMS Controls Systems

Total Area: 66.521 m²

Date: 2009

Palace of Peace and Reconciliation



Employers: Sembol Construction

Project Location: Astana-KAZAKHSTAN

Space of Works: Lighting and BMS Controls Systems

Total Area: 28.791 m²

Date: 2006

Hotel Rixos President



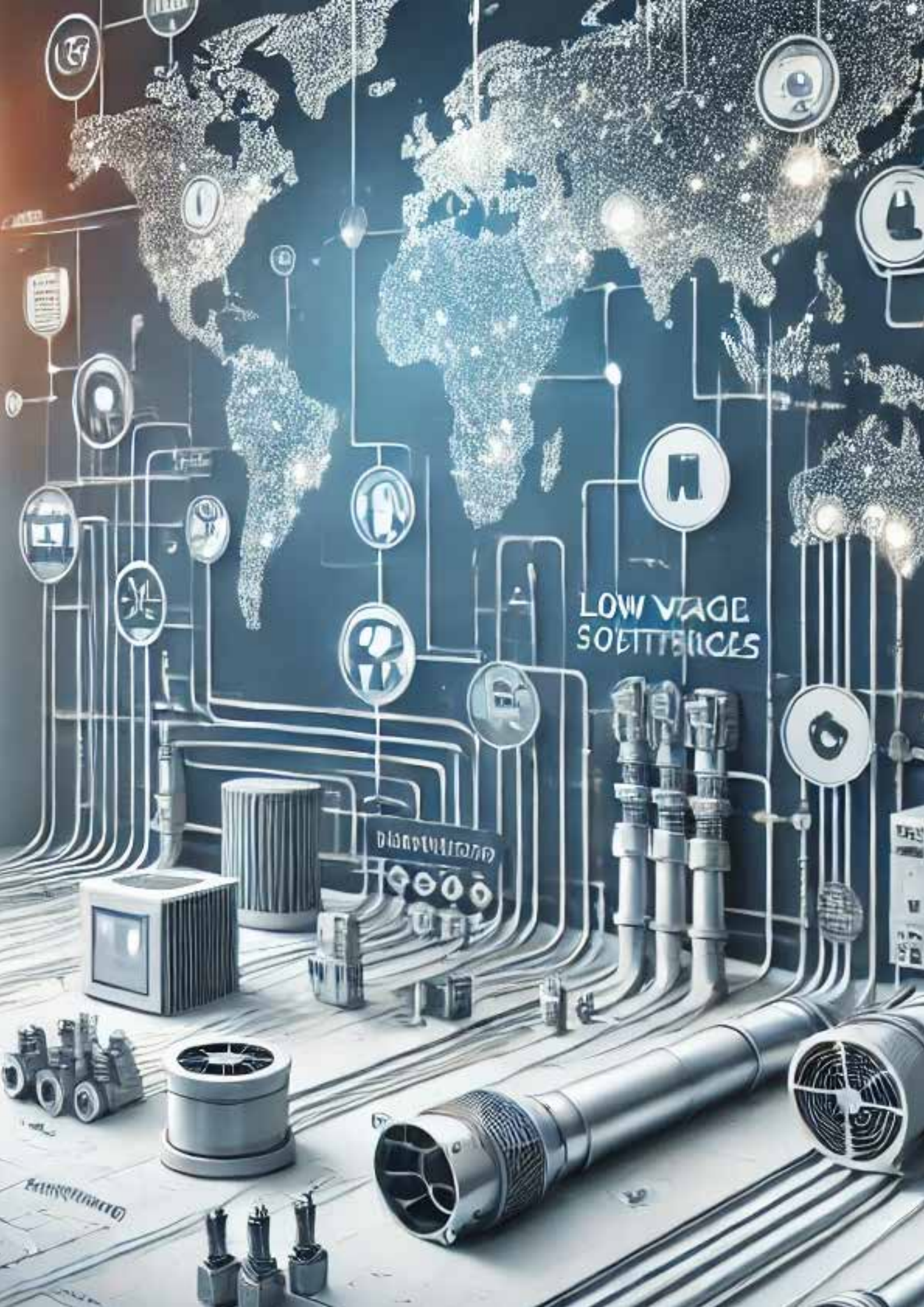
Employers: Sembol Construction

Project Location: Astana-KAZAKHSTAN

Space of Works: Lighting and BMS Controls Systems

Total Area: 27.600 m²

Date: 2005



LOW VOLTAGE
SOLUTIONS

DISCONTINUED

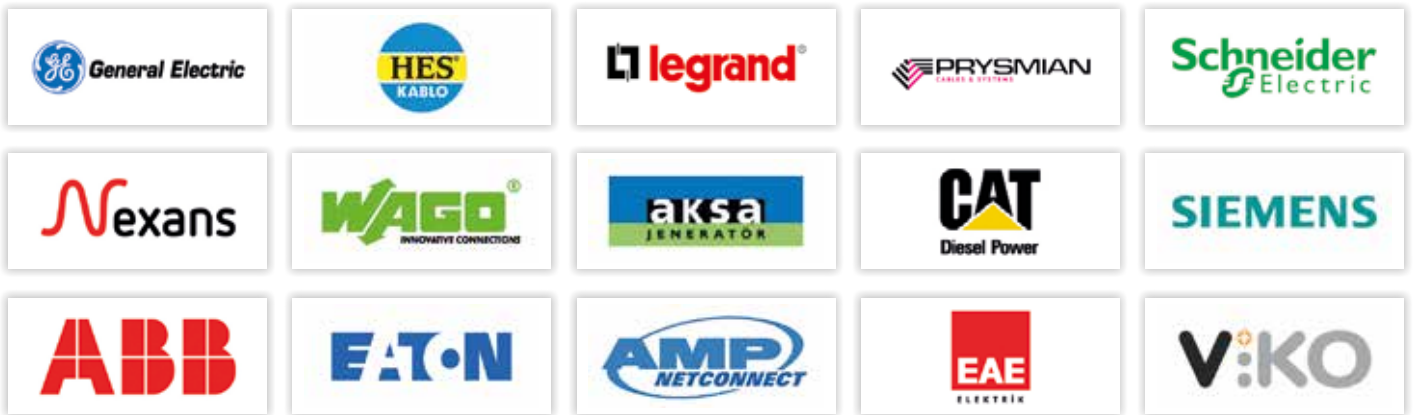
0000
0000

DISCONTINUED

EMPLOYERS



ELECTRIC



LOW VOLTAGE SYSTEM & AUTOMATION



MECHANICAL





Technical Contracting

TURKEY

Tatlısu Mah. Şenol Güneş Bulvarı
N:2/A Miara Tower D:61
Ümraniye/İSTANBUL
p: +90 216 594 59 97
info@asys-engineering.com
www.asys-engineering.com

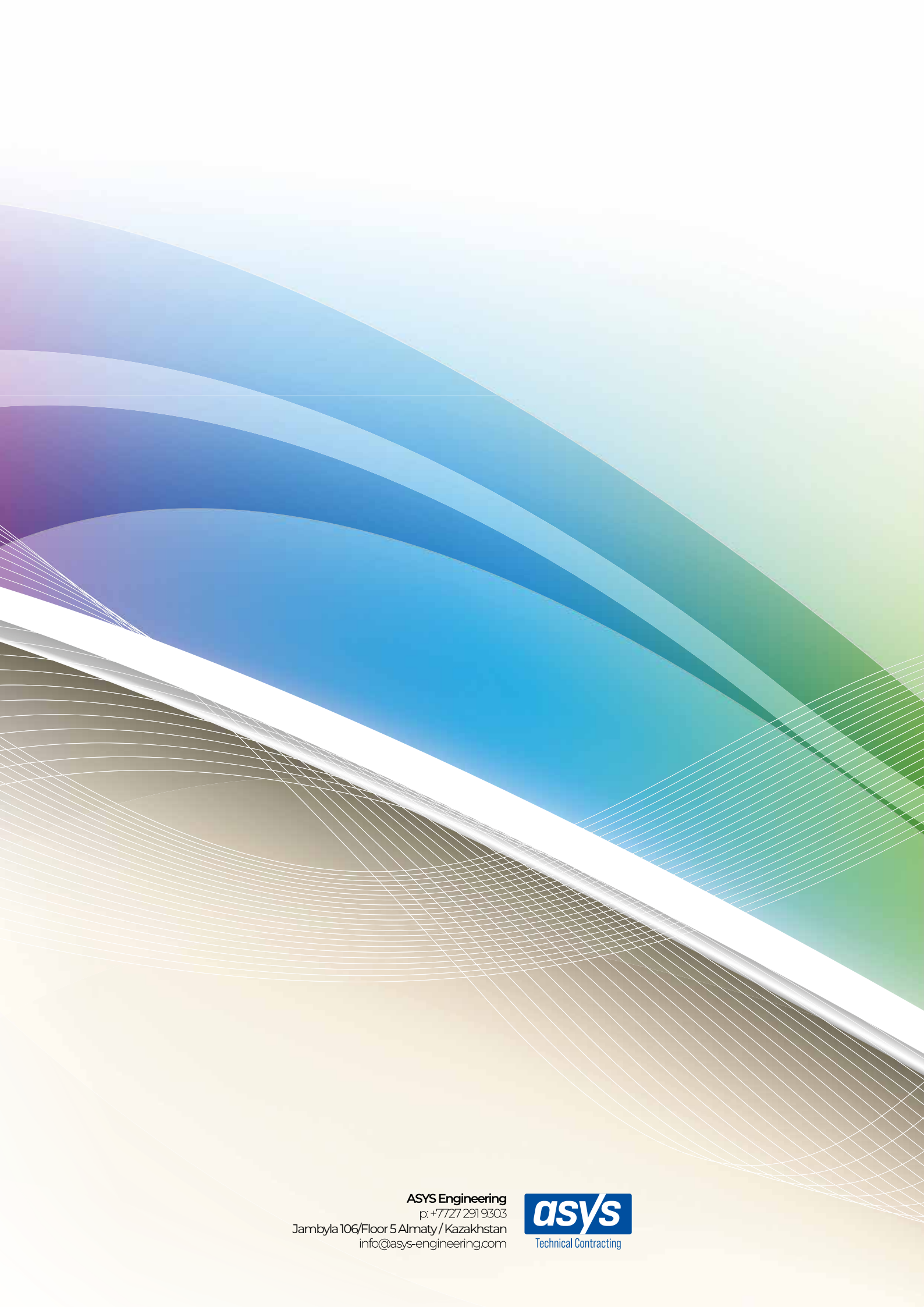


KAZAKHSTAN

Jambyla 106/Floor 5 Almaty,
Kazakhstan
p: +7727 291 9303
info@asys-engineering.com
www.asys-engineering.com

RUSSIA

Yevropeyskiy Prospekt, 8, Kudrovo,
Leningrad Oblast, Rusya, 188691
p: +000 000 000 000
info@asys-engineering.com
www.asys-engineering.com



ASYS Engineering
p: +7727 291 9303
Jambyla 106/Floor 5 Almaty / Kazakhstan
info@asys-engineering.com

